

Eight Lamp School Bus Electronic Flasher/Controller



Key Features

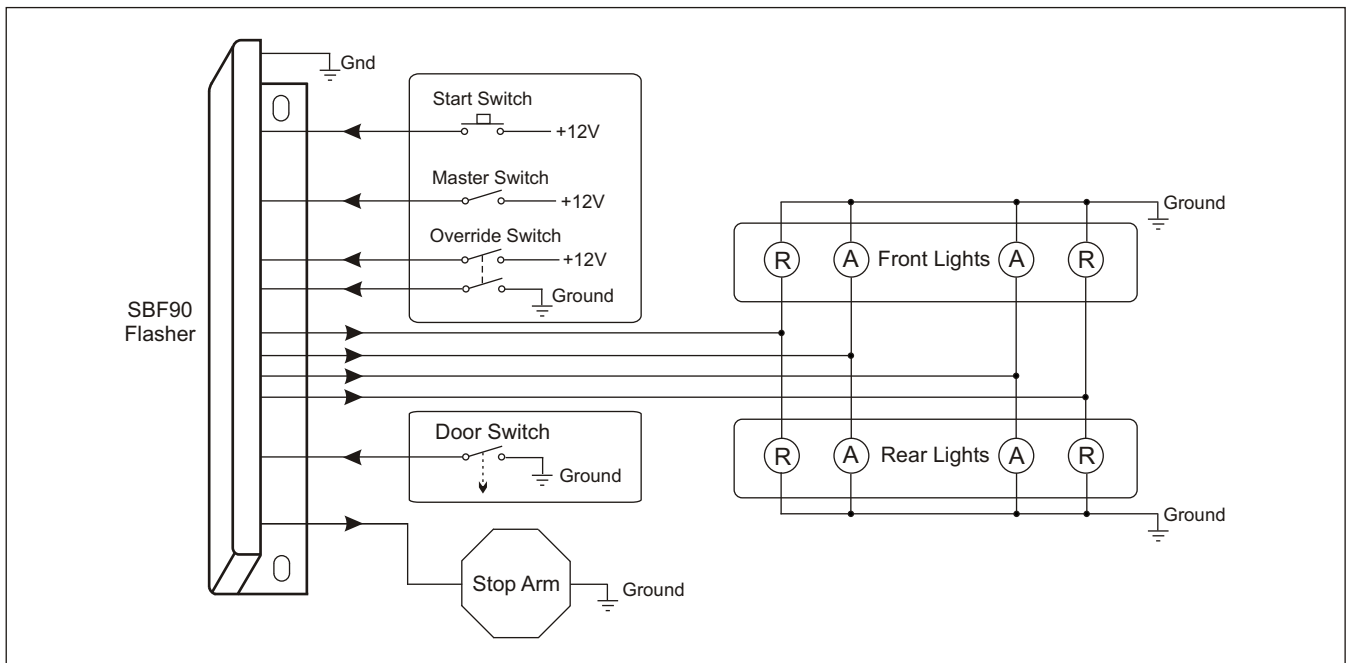
- Industry Standard Functionality - Compatible with existing bus designs.
- Rugged Anodized Aluminum Case with Sealed Electronics.
- Industry Standard Faston Wiring Terminals and Pin Assignments.
- Ultra Compact Size - Occupies less space than conventional flashers.
- Highly Efficient Power Switching Design - Very low heat loss.

The Model SBF90 is an advanced technology electronic warning light flasher designed for the school bus flasher replacement market. Its functionality, mounting hole centers, and wiring terminations are identical to the typical electronic flashers used on school buses. It is also an ideal choice for replacing the older mechanical type flashers when higher reliability is desired.

The SBF90 flasher's industry standard functionality provides for both sequential and non-sequential operation, and will accommodate 4-lamp and 8-lamp warning light configurations. Each of the lamp outputs (two red and two amber) are rated at 16 amps. The output for the stop arm is rated at 3 amps. Wires are terminated via 0.250 inch Faston blade terminals and are labeled with both terminal numbers and functions.

The design provides safeguards for over current, over temperature, short circuit, and loss of ground. A highly efficient current switching circuit is employed that produces very little heat loss. Advanced electronic circuitry employs surface mount technology (SMT) and includes a silicone coating to protect against environmental influences such as dust and moisture. Its metal case is made of rugged anodized aluminum.

System Diagram



SBF90 School Bus Flasher/Controller

Specifications

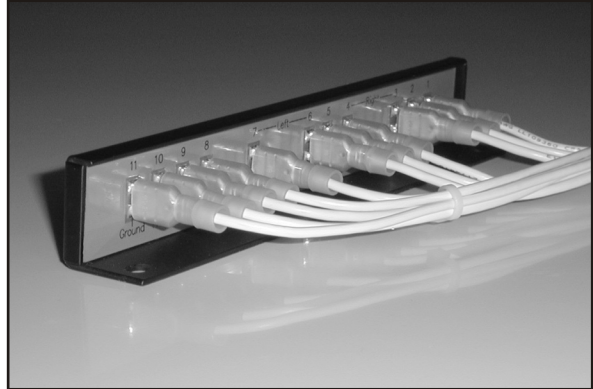
Electrical

Input Voltage: 8 to 16 volts
 Output Current (Pins 3, 4, 6 & 7): 16 Amps
 Output Current (Pin 5): 3 Amps

Mechanical

Weight: 0.15 lbs
 Dimensions: 0.875" W x 1.00" H x 6.50" L
 Case Material: Anodized Aluminum
 Operating Temperature: -40 C to +85 C
 Storage temperature: -50 C to +85 C
 Terminals: 0.250 Inch Faston (11 Total)

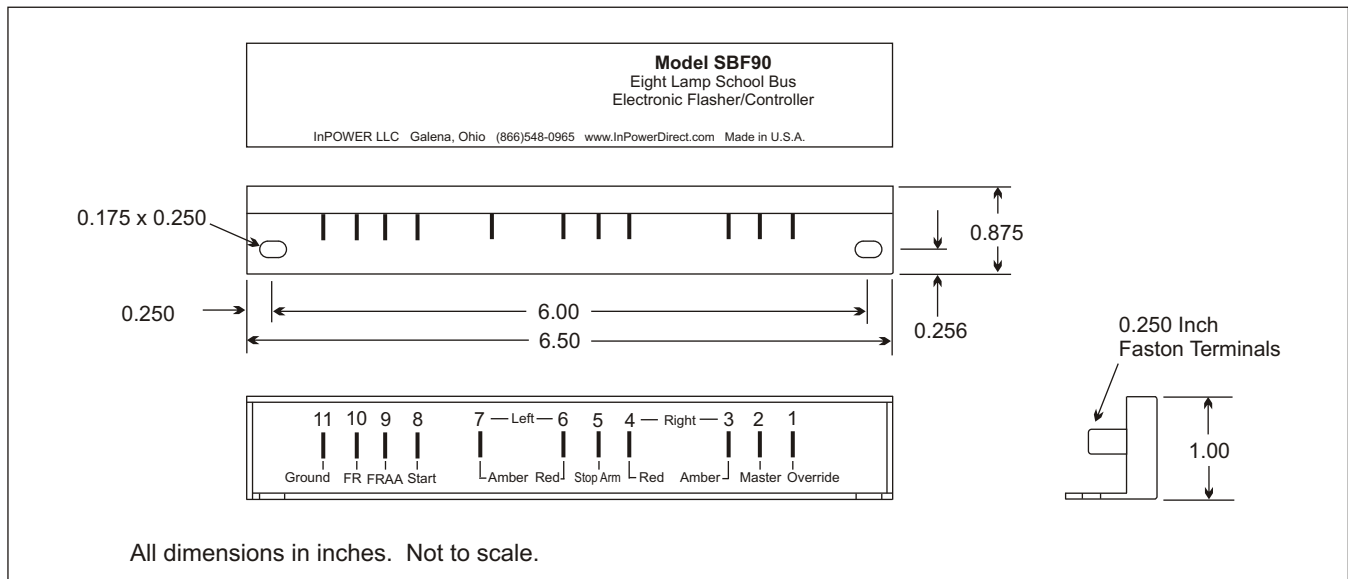
Wire Terminations



Pin Assignments

1	Override	To Override Switch (+12V)	9	FRAA	(Flash Red After Amber). To Door Switch for Sequential, or no connection for Non-Sequential operation.
2	Master	To Master Switch (+12V)	10	FR	(Flash Red When Door is Opened). To Override Switch for Sequential, or to Door Switch for Non-Sequential operation.
3	Right Amber	To Right Amber Lamp	11	Ground	To Ground
4	Right Red	To Right Red Lamp			
5	Stop Arm	To Stop Arm Solenoid			
6	Left Red	To Left Red Lamp			
7	Left Amber	To Left Amber Lamp			
8	Start	To Start Switch (+12V)			

Mechanical Drawing



InPOWER LLC

3555 Africa Road
 Galena, Ohio 43021
 Tel 740-548-0965
 Fax 740-548-2302
 www.InPowerDirect.com

Offered by: